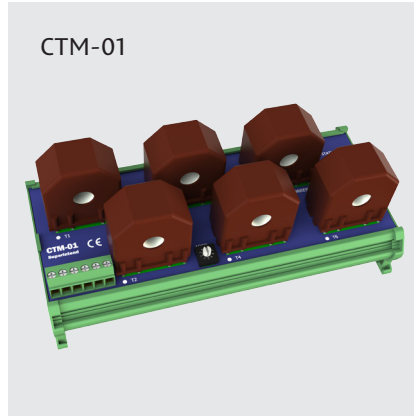


Insulation Fault Location Systems for Medical applications

IMD SERIES, TYPES FLI-01 AND CTM-01



FLI-01



CTM-01

NEW!

NEW Insulation fault location systems, FLI-01 and CTM-01 for medical IT Networks!

- FLI-01 for injecting the fault location signal
- CTM-01 for detecting the fault location signal in 6 channels
- A total of 8 CTM-01 devices can be connected to one IM-01.MED / FLI-01
- In other words, up to 48 circuits can be monitored

The insulation fault location is shown on the CTM-01 which has detected the fault. The ID of that CTM-01 is shown on the FLI-01. The exact fault location is shown also on the IM-01.MED.

Power supply specifications

Nominal Input voltage	12 VDC
Nominal input current	FLI-01: 38mA, CTM-01: 15mA

Measurement specification

Locating current	max. 0,5 mA
Response sensitivity	80 uA
Response time	max. 42 s

Alarm contact (potential free changeover)

Alarm contact	IM-01.MED
---------------	-----------

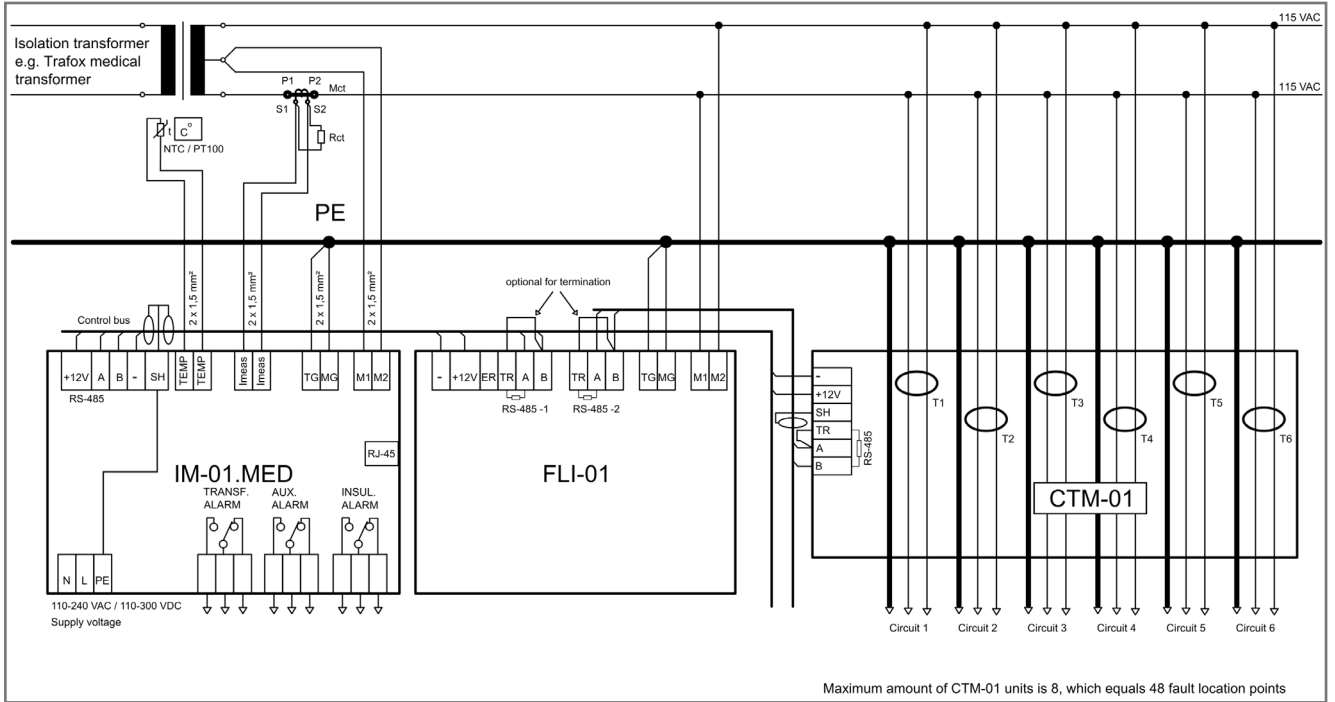
Standards

Measurements	IEC 61557-9
Safety	IEC 61010
EMC	IEC 61326-2-4, CISPR 11 / EN55011, IEC61000-4-2, IEC61000-4-3, IEC61000-4-4, IEC61000-4-5, IEC61000-4-6

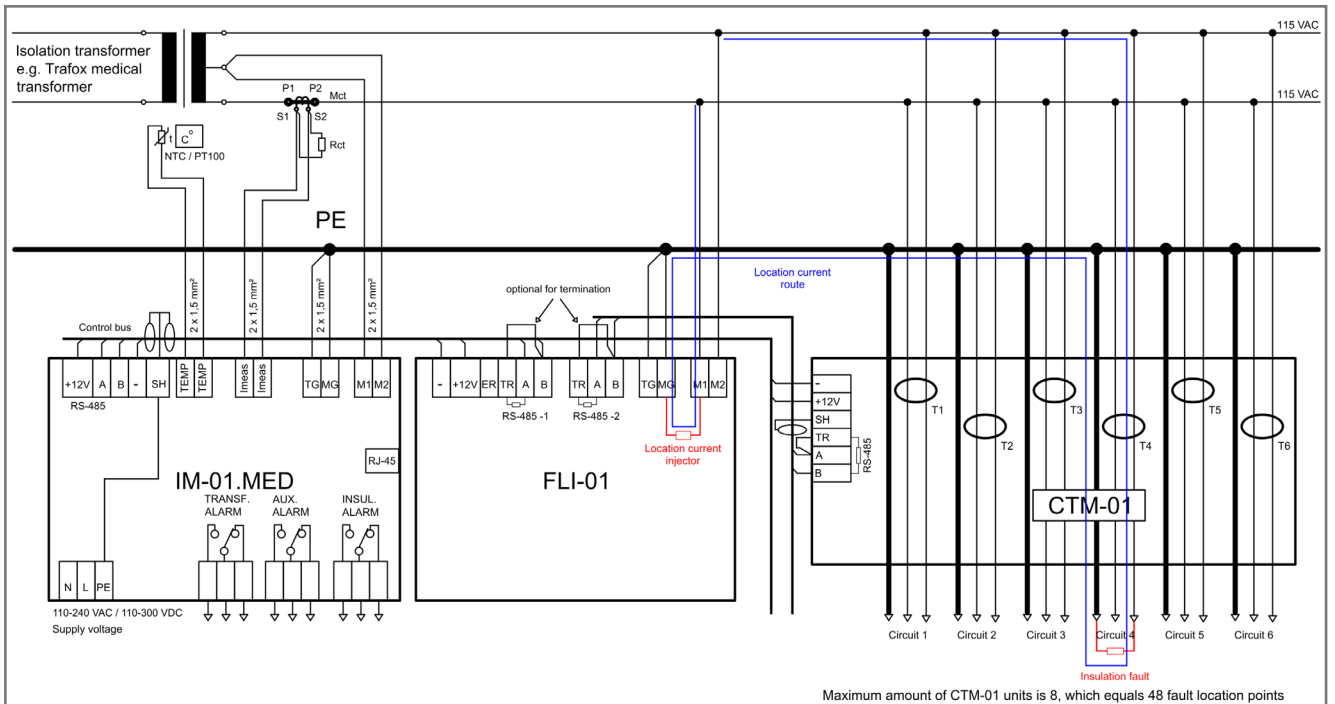
General

Dimension (W x L x D)	FLI-01	53,5 x 110 x 62 mm
	CTM-01	181 x 90 x 75 mm, inner hole Ø 10 mm
Case Material	Plastic	
Mounting interface	DIN rail clamp	

Connection Diagram



Fault Location Current Route



Muuntosähkö

Trafox is a brand of Muuntosähkö Oy. We develop, manufacture and customise high-quality transformers, chokes, filters and Trafox Superintend® monitoring devices for a large number of applications.

MUUNTOSÄHKÖ OY TRAFÖX

P.O. Box 10 | FI-00621 Helsinki | Tel. +358 207 933 700 | Fax +358 207 933 746 | sales@trafox.fi



www.trafox.fi